

**FIELD NOTE SUMMARY**

**Project Number / Task:** 1900/6.0  
**Project Names:** South Ash Pond #3 Liner Replacement

<b>Date:</b>	October 13, 2009
<b>Work Scope:</b>	Liner Installation Inspection – South Ash Pond #3
<b>NRT Staff:</b>	Heather Simon
<b>Contractors:</b>	Brieser Construction –Mike Schmidt and Clean Air and Water Systems (CAAWS)
<b>Weather:</b>	Sunny 50s degree F
<b>Equipment:</b>	Digital camera
<b>Field Comments:</b>	<p><u>10/5</u></p> <ul style="list-style-type: none"> <li>• I arrive on site around 10:00, checked in at gate house.</li> <li>• CAAWS on-site placing 12-oz non-woven atop liner, banding marker post, and adding sealant to batten bar attachments.</li> <li>• Brieser backfilling anchor trenches.</li> <li>• CAAWS finished liner work around 1pm.</li> <li>• HDPA Liner installation was completed yesterday. Extra material was brought on-site from Joliet station on Sunday, they were short 1,000sf since the pond is deeper</li> <li>• Left site at 1300</li> </ul>
<b>Scope Changes:</b>	<ul style="list-style-type: none"> <li>• None</li> </ul>
<b>Site Conditions:</b>	Site looks good. I asked Mike with Brieser to fix liner located southwest corner of weir. Liner is folded in a way that could potentially allow storm water to flow beneath the liner; he is going to straighten the liner.

**Signature:** \_\_\_\_\_ **Date:** \_\_\_\_\_  
 Heather Simon

MWG13-15\_8236  
 EXHIBIT  
 MWG-507  
Shawbury No. 5201



Liner connected to weld strip along concrete pad, and 12oz non-woven geotextile placed above the HDPE liner to protect the connection and liner.



South Ash Pond #3 looking east of the 12oz non-woven geotextile placed above the liner.

# FIELD NOTE SUMMARY

**Project Number / Task:** 1900/6.0  
**Project Names:** South Ash Pond #3 Liner Replacement

<b>Date:</b>	October 5 and 6, 2009
<b>Work Scope:</b>	Liner Installation Inspection – South Ash Pond #3
<b>NRT Staff:</b>	Heather Simon
<b>Contractors:</b>	Brieser Construction –Mike Schmidt and Clean Air and Water Systems (CAAWS)
<b>Weather:</b>	10/5 Partly Sunny 60s degree F 10/6 Rainy, cloudy 40s degree F
<b>Equipment:</b>	Digital camera
<b>Field Comments:</b>	<p><u>10/5</u></p> <ul style="list-style-type: none"><li>• I arrive on site around 9:30, checked in at gate house.</li><li>• CAAWS on-site making sand bags.</li><li>• Brieser excavated southwest corner anchor trench and moved to the north bank anchor trench. Brieser completed the north anchor trench around noon.</li><li>• CAAWS began liner installation at 12:30 at the northwest corner of Pond #3.</li><li>• Liner installation was completed along the entire length of north bank today.</li><li>• Field seam tests were conducted.</li><li>• Left site at 1600</li></ul> <p><u>10/6</u></p> <ul style="list-style-type: none"><li>• I arrive on site around 730</li><li>• Brieser excavating northeast corner anchor trench including beneath the discharge pipes backfilling north anchor trench.</li><li>• Brieser began backfilling north anchor trench. They plan to excavate the entire anchor trench today, and top dress the gravel road between Pond #3 and #2.</li><li>• Poz-o-pac in the southwest corner at the base of the pond is higher than the rest of the pond. I asked Mike with Brieser to place backfill along the southwest corner poz-o-pac pad for better subgrade transition for the liner.</li><li>• CAAWS left at 8:30am due to the rain.</li></ul> <p>Left site at 9:00</p>
<b>Scope Changes:</b>	<ul style="list-style-type: none"><li>• None</li></ul>
<b>Site Conditions:</b>	In good condition, compaction of anchor trench backfill required.

**Signature:** \_\_\_\_\_ **Date:** \_\_\_\_\_  
Heather Simon



Installation of 16 oz non-woven geotextile and white HDPE liner, looking at northeast corner of South Ash Pond #3.

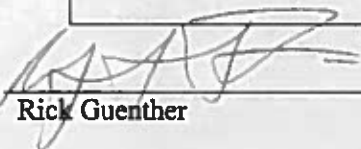


Thermal fusion welding apparatus

**FIELD NOTE SUMMARY**

**Project Number / Task:** 1900/6.0  
**Project Names:** South Ash Pond #3 Liner Replacement

<b>Date:</b>	September 28, 2009
<b>Work Scope:</b>	Slope and Subgrade Inspection – South Ash Pond #3
<b>NRT Staff:</b>	Rick Guenther
<b>Contractors:</b>	Brieser Construction – Mike Schmidt
<b>Weather:</b>	Clear with high winds, 50 °F
<b>Equipment:</b>	Digital camera
<b>Field Comments:</b>	<p>9/28</p> <ul style="list-style-type: none"><li>• I arrive on site around 9:30, checked in at gate house.</li><li>• Talked with Beckie (MWG) and Mike (Brieser). Mike gave us a run down on the status of the pond.</li><li>• Brieser plans to have the side slopes completed and the warning posts in by the end of the week and will schedule a survey for the subgrade.</li><li>• Brieser was working on the south slope placing C6 material.</li><li>• I examined the subgrade and the new concrete base around the influent pipes.</li><li>• The new concrete with welding strip looked good and Brieser had built a slope from the base of the pond along the concrete base.</li><li>• The subgrade looked good.</li><li>• Left site at 12:30</li></ul>
<b>Scope Changes:</b>	<ul style="list-style-type: none"><li>• Brieser using C6 material to construct side slopes rather than the specified lime stone screenings because of workability.</li></ul>
<b>Site Conditions:</b>	Subgrade is in good condition for liner placement.

Signature:  Date: 9.28.09  
Rick Guenther



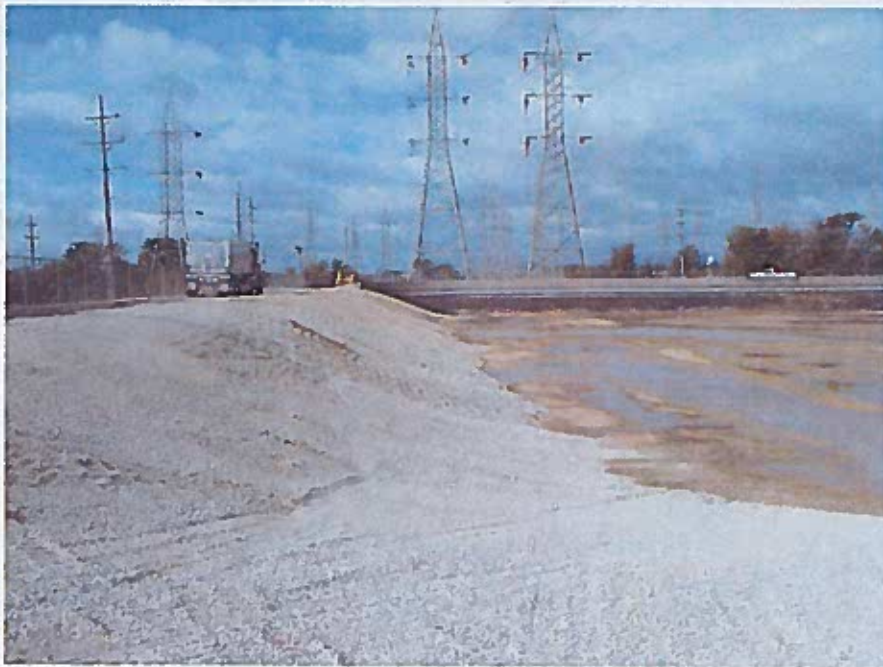
**New concrete base with welding strip around influent pipe support posts (looking west).**



**Looking northwest from top of ramp at pond subgrade.**



**Looking south along the weir at subgrade.**



**Looking west along constructed side slope.**

# FIELD NOTE SUMMARY

**Project Number / Task:** 1900/6.0  
**Project Names:** South Ash Pond #3 Liner Replacement

<b>Date:</b>	October 5 and 6, 2009
<b>Work Scope:</b>	Liner Installation Inspection – South Ash Pond #3
<b>NRT Staff:</b>	Heather Simon
<b>Contractors:</b>	Brieser Construction –Mike Schmidt and Clean Air and Water Systems (CAAWS)
<b>Weather:</b>	10/5 Partly Sunny 60s degree F 10/6 Rainy, cloudy 40s degree F
<b>Equipment:</b>	Digital camera
<b>Field Comments:</b>	<p><u>10/5</u></p> <ul style="list-style-type: none"> <li>I arrive on site around 9:30, checked in at gate house.</li> <li>CAAWS on-site making sand bags.</li> <li>Brieser excavated southwest corner anchor trench and moved to the north bank anchor trench. Brieser completed the north anchor trench around noon.</li> <li>CAAWS began liner installation at 12:30 at the northwest corner of Pond #3.</li> <li>Liner installation was completed along the entire length of north bank today.</li> <li>Field seam tests were conducted.</li> <li>Left site at 1600</li> </ul> <p><u>10/6</u></p> <ul style="list-style-type: none"> <li>I arrive on site around 730</li> <li>Brieser excavating northeast corner anchor trench including beneath the discharge pipes backfilling north anchor trench.</li> <li>Brieser began backfilling north anchor trench. They plan to excavate the entire anchor trench today, and top dress the gravel road between Pond #3 and #2.</li> <li>Poz-o-pac in the southwest corner at the base of the pond is higher than the rest of the pond. I asked Mike with Brieser to place backfill along the southwest corner poz-o-pac pad for better subgrade transition for the liner.</li> <li>CAAWS left at 8:30am due to the rain.</li> </ul> <p>Left site at 9:00</p>
<b>Scope Changes:</b>	<ul style="list-style-type: none"> <li>None</li> </ul>
<b>Site Conditions:</b>	In good condition, compaction of anchor trench backfill required.

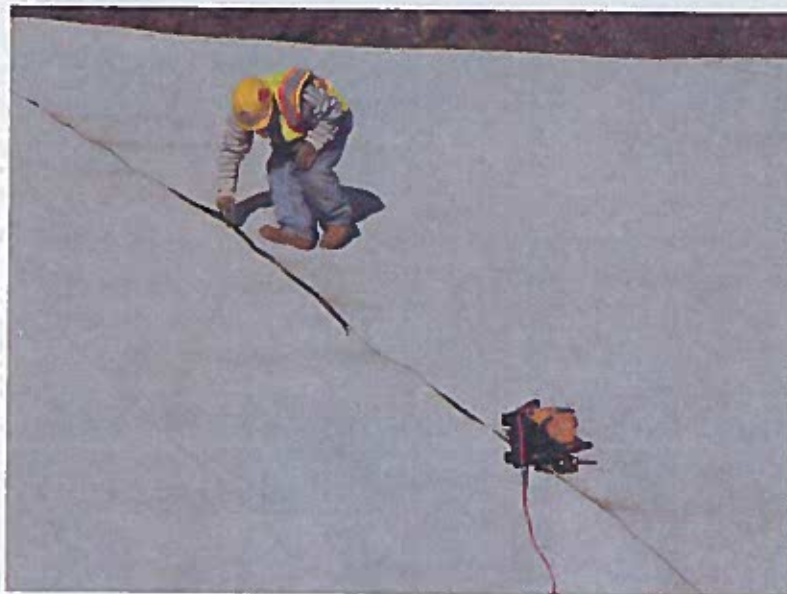
Signature: Heather M Simon  
 Heather Simon

Date: 10/7/09





**Installation of 16 oz non-woven geotextile and white HDPE liner, looking at northeast corner of South Ash Pond #3.**

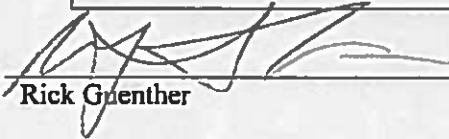


**Thermal fusion welding apparatus**

**FIELD NOTE SUMMARY**

**Project Number / Task:** 1900/6.0  
**Project Names:** South Ash Pond #3 Liner Replacement

<b>Date:</b>	October 7 and 8, 2009
<b>Work Scope:</b>	Liner Installation Inspection – South Ash Pond #3
<b>NRT Staff:</b>	Rick Guenther
<b>Contractors:</b>	Brieser Construction –Mike Schmidt and Clean Air and Water Systems (CAAWS)
<b>Weather:</b>	10/7 Partly Sunny low 60s degree F 10/8 cloudy to Rainy, around 1100 40s degree F
<b>Equipment:</b>	Digital camera
<b>Field Comments:</b>	<p><u>10/7</u></p> <ul style="list-style-type: none"> <li>• I arrive on site around 9:30, checked in at gate house.</li> <li>• CAAWS was working on the batten bar and placing liner along the north side of the concrete pipe support and in the NE corner.</li> <li>• The anchor trench was completed yesterday.</li> <li>• CAAWS completed geotextile placement on slopes (except near ramp area) and about half the base of the pond.</li> <li>• Completed connection of liner to north side of concrete with the welding strip.</li> <li>• Brieser backfilled the anchor trench where liner was completed. Brieser also had the roller out to compact anchor trench.</li> <li>• Left site at 1700</li> </ul> <p><u>10/8</u></p> <ul style="list-style-type: none"> <li>• I arrive on site around 730</li> <li>• CAAWS placed geotextile along the weir and placed liner. 1 panel of liner was also placed from the west end of the discharge pipes to the west but was not seamed</li> <li>• CAAWS left at 11:00 am due to the rain.</li> </ul> <p>Left site at 11:30</p>
<b>Scope Changes:</b>	<ul style="list-style-type: none"> <li>• None</li> </ul>
<b>Site Conditions:</b>	In good condition, compaction of anchor trench backfill required.

**Signature:**   
 Rick Guenther

**Date:** 10.8.9



**Welding liner to replaced welding strip (looking south).**



**Looking south, placing liner on south slope and crew working on welding toe of slope.**



Looking south placing liner at weir.



Looking north, working on placement of pipe collar around metal pipe.

# FIELD NOTE SUMMARY

**Project Number / Task:** 1900/6.0  
**Project Names:** South Ash Pond #3 Liner Replacement

<b>Date:</b>	October 13, 2009
<b>Work Scope:</b>	Liner Installation Inspection – South Ash Pond #3
<b>NRT Staff:</b>	Heather Simon
<b>Contractors:</b>	Brieser Construction – Mike Schmidt and Clean Air and Water Systems (CAAWS)
<b>Weather:</b>	Sunny 50s degree F
<b>Equipment:</b>	Digital camera
<b>Field Comments:</b>	<p><del>10/5</del> 10/13</p> <ul style="list-style-type: none"><li>• I arrive on site around 10:00, checked in at gate house.</li><li>• CAAWS on-site placing 12-oz non-woven atop liner, banding marker post, and adding sealant to batten bar attachments.</li><li>• Brieser backfilling anchor trenches.</li><li>• CAAWS finished liner work around 1pm.</li><li>• HDPA Liner installation was completed yesterday. Extra material was brought on-site from Joliet station on Sunday, they were short 1,000sf since the pond is deeper</li><li>• Left site at 1300</li></ul>
<b>Scope Changes:</b>	<ul style="list-style-type: none"><li>• None</li></ul>
<b>Site Conditions:</b>	Site looks good. I asked Mike with Brieser to fix liner located southwest corner of weir. Liner is folded in a way that could potentially allow storm water to flow beneath the liner; he is going to straighten the liner.

**Signature:**  **Date:** 10/14/09  
Heather Simon



**Liner connected to weld strip along concrete pad, and 12oz non-woven geotextile placed above the HDPE liner to protect the connection and liner.**



**South Ash Pond #3 looking east of the 12oz non-woven geotextile placed above the liner.**

# FIELD NOTE SUMMARY

**Project Number / Task:** 1900/6.0  
**Project Names:** South Ash Pond #3 Liner Replacement

<b>Date:</b>	October 22, 2009
<b>Work Scope:</b>	Liner Leak Detection Survey -- South Ash Pond #3
<b>NRT Staff:</b>	Rick Guenther
<b>Contractors:</b>	Brieser Construction --Mike Schmidt and Leak Detection Services, Inc.
<b>Weather:</b>	10/22 light rain high 40s degree F
<b>Equipment:</b>	Digital camera
<b>Field Comments:</b>	<p>10/22</p> <ul style="list-style-type: none"><li>• I arrive on site around 9:30, checked in at gate house.</li><li>• Leak Detection Services (LDS) was running lines east and west and had completed about 1/2 the area of the pond.</li><li>• Took a look around the pond at the finish warning layer and batten bar attachment. Noticed that pocket of water existed below the liner along several edges of the toe of the pond. This was runoff that was pushed to these areas when placing warning layer. It will disappear once the pond fills up. I informed Beckie (MWG) of this.</li><li>• Once the survey was complete LDS rechecked an area along the new concrete support shelf for the influent pipes. It was determined that the current was being pulled the way the current came around from both sides of the structure when running north-south lines. There were no signs of this when running east-west lines.</li><li>• LDS then showed me all the lines he ran across the pond and there was no sign of a leak.</li></ul> <p>Left site at 11:30</p>
<b>Scope Changes:</b>	<ul style="list-style-type: none"><li>• None</li></ul>
<b>Site Conditions:</b>	In good condition, warning layer was in good condition.

Signature:   
Rick Guenther

Date: 10.22.09

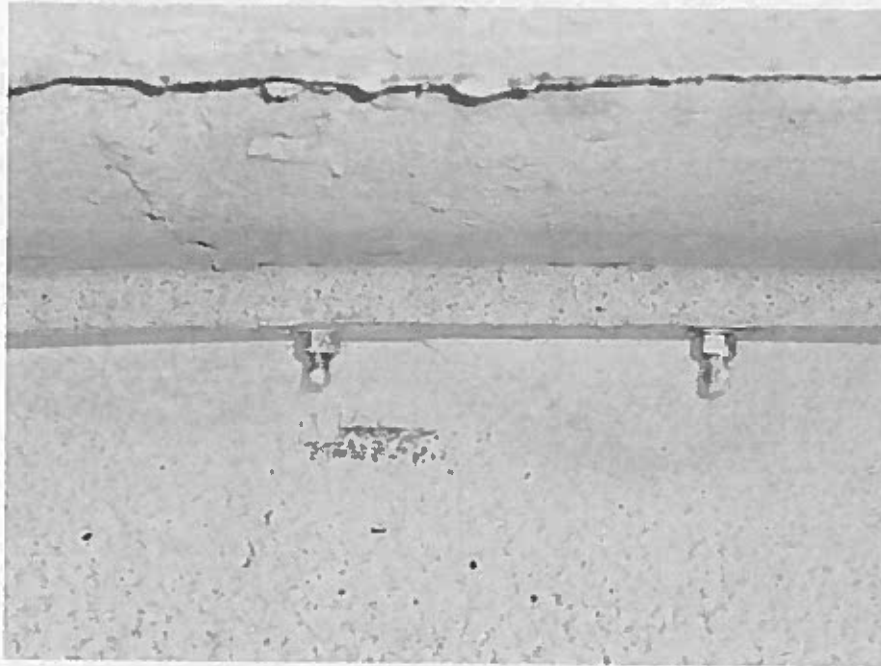


**Leak Detection in process (looking west from ramp).**

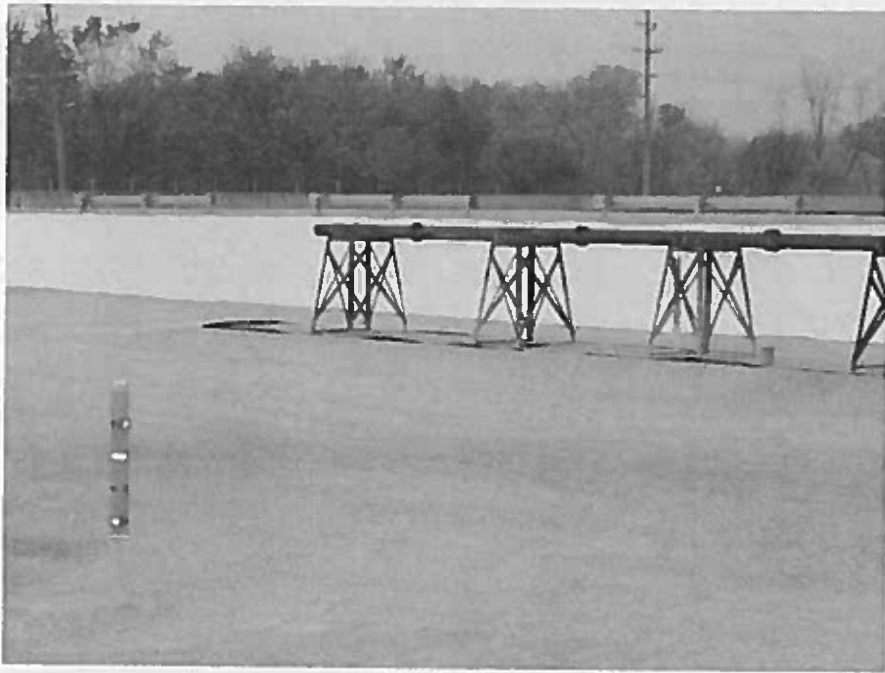


**Warning layer along north slope (looking west).**





**Batten bar in place on weir with sealant.**



**Warning layer placed against new concrete support structure (looking NW from ramp).**



**Guard rails placed along south slope (looking west).**



**Guard rail between ash pond 2 and 3 (looking west).**

# FIELD NOTE SUMMARY

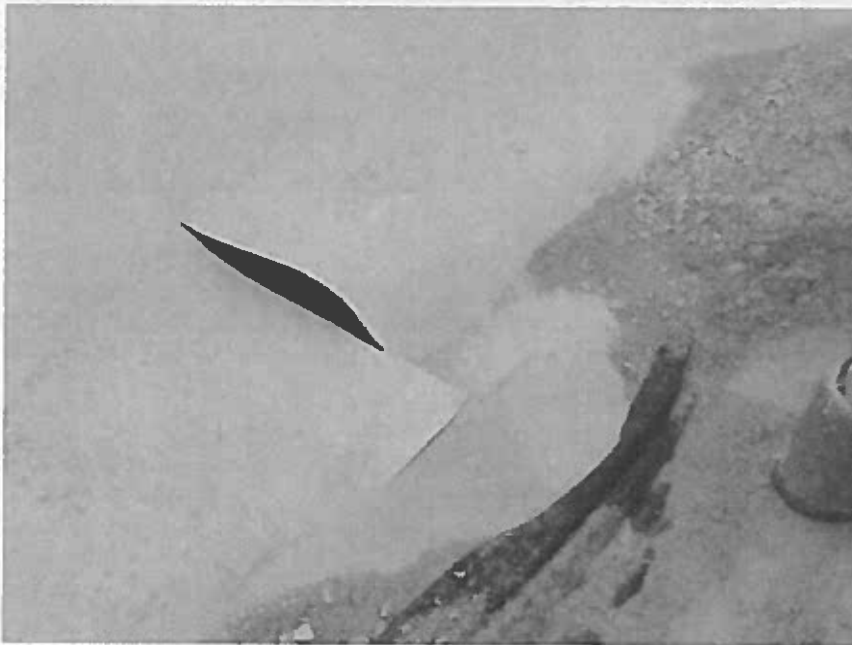
**Project Number / Task:** 1900/6.0  
**Project Names:** South Ash Pond #3 Liner Replacement

<b>Date:</b>	November 10, 2009
<b>Work Scope:</b>	Patch Liner from Removal of Water under Liner – South Ash Pond #3
<b>NRT Staff:</b>	Heather Simon
<b>Contractors:</b>	Brieser Construction –Mike Schmidt and Clean Air & Water.
<b>Weather:</b>	11/10 low 50's degree F, scattered clouds
<b>Equipment:</b>	Digital camera
<b>Field Comments:</b>	<u>11/10</u> <ul style="list-style-type: none"><li>• Arrive on site around 8:00, checked in at gate house.</li><li>• Brieser on-site since yesterday to pump water beneath liner along the base of side slopes.</li><li>• When Brieser arrived yesterday the water beneath the liner had dissipated by 70% since last visit 2 weeks ago.</li><li>• Brieser &amp; MWG chose to put 6 holes along toe of slope (2-north end, 2-south end, and 2-west end) to pump water.</li><li>• On arrival pumps working but not much water coming out of holes.</li><li>• CAAW arrived around 11:20.</li><li>• CAAW patched the holes located at panels 19, 27, 52, 47, 41, and 10.</li></ul>
<b>Scope Changes:</b>	<ul style="list-style-type: none"><li>• None</li></ul>
<b>Site Conditions:</b>	In good condition.

Signature: Heather Simon Date: 11/11/09  
Heather Simon



**Hole in liner for water removal on south toe of basin (looking east).**



**Close up hole in liner for water removal.**